

# **Evaluation of Outstanding Remarkable Values for Collawash River**

## **March 2011**

### **Segment 1**

From headwaters of East Fork Collawash River to Buckeye Creek

**Mileage: 11.0 miles**

**Free flowing: Yes**

**Scenic: 3, Substantial**

River flows through a narrow, steeply sloped, well dissected canyon that contains several cliffs and talus slopes throughout the segment. The river flows over and around many rocks, through pools, and over one waterfall approximately 20 feet high. There are also some broader flood plains within the segment. The vegetative pattern is considered relatively common for the region. While there are few, if any long distance views from the canyon, the combination of cliffs and the river with its large rocks, pools and cascades provides substantial photo opportunities. There are a few timber harvest units visible in places along the river, but overall appearance along the segment is a natural forested setting. The combination of the above factors gave the scenic values a rating of “3”.

**Recreational: 3, Substantial**

Recreational use within the corridor is primarily dispersed in nature such as camping, hiking, and fishing. Users are primarily local in nature but there are some users from other places within the state who use the area. The area does have good potential for additional development to meet the needs of the recreationist. Because some of the use in the area is from users outside the local area, recreational values were rated a “3”.

**Geologic/Hydrologic: 2, Moderate**

The river is within a narrow canyon with a number of cliffs along the canyon walls. There is one steep cascade approximately 20 feet high within the segment. There are also some wide flood plains in places along the river. There are no other unique geologic or hydrologic features found within the segment. The combination of the above can be found within several other rivers within the region, but is not common to all. Because of this, these values were rated a “2” for the segment.

**Fisheries: 4, Outstandingly Remarkable**

The river provides excellent spawning habitat for winter steelhead trout and resident rainbow trout. A steep cascade area located in the lower portion of the segment (¼ mile south of the mouth of Buckeye Creek) acts as a partial barrier for most anadromous fish. The channel in this area has been modified to facilitate fish passage to the abundant spawning habitat in the upper

portion of the segment. Steelhead are known to migrate beyond this cascade but it is still considered a barrier for both coho and Chinook. Due to excellent habitat quality throughout the segment fisheries values were rated a “4” for the segment.

### **Wildlife: 2, Moderate**

Along the river are several high quality riparian habitat areas that are important to a number of wildlife species. There is limited habitat that would meet some of the needs of the Northern Spotted Owl, a federally listed threatened species. This habitat is limited in size and therefore does not meet all the species’ needs. The Collawash drainage, however, may provide some important dispersion habitat for the owl. The lower end of the corridor also provides some limited winter range for big game species. Based on the above factors, wildlife values were rated a “2” for the segment.

### **Wildlife: 3, Substantial**

Along the river are several high quality riparian habitat areas that are important to a number of wildlife species. With the exception of plantations, the stands in the river corridor are suitable habitat for northern spotted owl, a federally listed threatened species. There are two core areas for spotted owls and the home range of four spotted owls. There is one known Red Tree vole nest within this drainage. Red Tree voles are uncommon on the Mt Hood National Forest and therefore this habitat has a high value to wildlife. This section of the drainage is mapped as winter range for deer and elk.

### **Ecological/Botanical: 3, Substantial**

No known candidate or listed Threatened and Endangered plant species are known to be within the corridor. There is potential habitat for *Corydalis aquae-gelidae*, a known sensitive plant that is a candidate species for federal listing as a Threatened plant. There is a good potential for location of Lycopodium and Botrychium in the headwaters; these are moisture dependent sensitive plants. The river corridor is also the northern most range of the sugar pine, *Pinus lambertiana*, which is found in isolated locations. Based on the above, the ecological/botanical values were rated a “3” for the segment.

### **Historical/Cultural: 2, Moderate**

There is evidence of prehistoric use of the river by Native Americans; existing evidence of the use includes the presence of obsidian flakes and some peeled cedars in various locations throughout the corridor. There is a high potential for Native American camping sites, though none have been found at this time. There are also some cabin sites that have been found, but most of the structures have deteriorated. The above types of sites are not considered to be in good, interpretable condition, though they do have some local importance in interpreting the history of the area. Because of this, the historical/cultural values were rated a “2” for the segment.

### **Eligible: Yes**

This determination is based on the outstandingly remarkable fishery values identified above. The substantial scenic, recreational, and ecological botanical values reinforce this determination.

**Potential Classification: Scenic**

The presence of roads into the corridor and some timber harvest units at each end of the corridor make the segment ineligible for a “Wild” classification. There are timber harvest units and roads present in the corridor but they generally are not visible from river itself except in the upper mile of the river, where units are more visible from the river. Since the major portion of the corridor maintains a largely primitive shoreline throughout most of its length, the segment qualifies for a “Scenic” classification.

**Segment 2**

From Buckeye Creek to Clackamas River

**Mileage: 6.8 miles**

**Free flowing: Yes**

**Scenic: 3, Substantial**

The river flows through a narrow, well dissected river canyon containing cliffs and talus slopes throughout the segment. There is also a large earth flow next to the river which is a point of interest. The river flows over and around many rocks, forming pools and cascades. The vegetative pattern is considered relatively common for the region. The presence of the road and associated harvest units does reduce the visual quality somewhat. The river and related landform does provide some good photo opportunities, though they are not considered outstanding. Based on the above factors, scenic values were rated a “3” for the segment.

**Recreational: 3, Substantial**

The area along the river receives a variety of heavy recreational use. The road along the lower 1/2 of the segment is traveled by many people from around the state on their way to Bagby Hot Springs, a regional attraction. There is also a developed campground and a picnic area in the lower portion of the corridor. While the river is not considered a major rafting river, there are areas where recreationists use kayaks and small rubber rafts to play on the river. There is also some fishing and hiking that takes place along the river. Users are primarily from the local area, but with the travel route to Bagby Hot Springs going through the corridor, there is use by recreationists from around the region along the river. There is a potential interpretive opportunity sharing about the earth flows and other geologic features along the river. This opportunity is considered to be primarily of local importance with some users coming from around the region. Because of the level of use along the river as well as some regional use, recreational values were

rated a “3” for the segment.

#### **Geologic/Hydrologic: 4, Outstandingly Remarkable**

There are a number of unstable earth flows along the river, some quite visible from the road. There is one area which could be considered a “textbook” example of a very active earth flow, and could be easily interpreted. Other hydrologic and geologic features found along the river might be considered relatively common in comparison to other rivers in the region. Because the “textbook” nature of the earth flow is considered to be outstandingly remarkable, a rating of “4” was given to the segment.

#### **Fisheries: 4, Outstandingly Remarkable**

Fish habitat quality is considered moderate for the segment. Anadromous fish using the river include spring chinook, winter and summer steelhead, and a late winter run of coho salmon. The coho are a rare native stock of salmon once found throughout the Columbia River basin but are now limited to the Clackamas river drainage. Because of the importance of this stock, fishery values were rated a “4” for the segment.

#### **Wildlife: 2, Moderate**

Habitat quality and quantity for big game is considered to be low for the corridor though there is limited important riparian habitat along the river itself. There is limited habitat that would meet some of the needs of the Northern Spotted Owl, a federally listed threatened species. Based on the above, wildlife values were rated a “2” for the segment.

#### **Ecological/Botanical: 2, Moderate**

No known candidate or listed T & B plant species are known to be within the corridor. There is potential habitat for *Corydalis aquae-gelidae*, a known sensitive plant that is a candidate for listing as a threatened plant species. Other plant communities found within or adjacent to the river are relatively common for rivers throughout the region, though they may not be found along all rivers. Based on the above, these values were given a rating of “2” for the segment.

#### **Historical/Cultural: 2, Moderate**

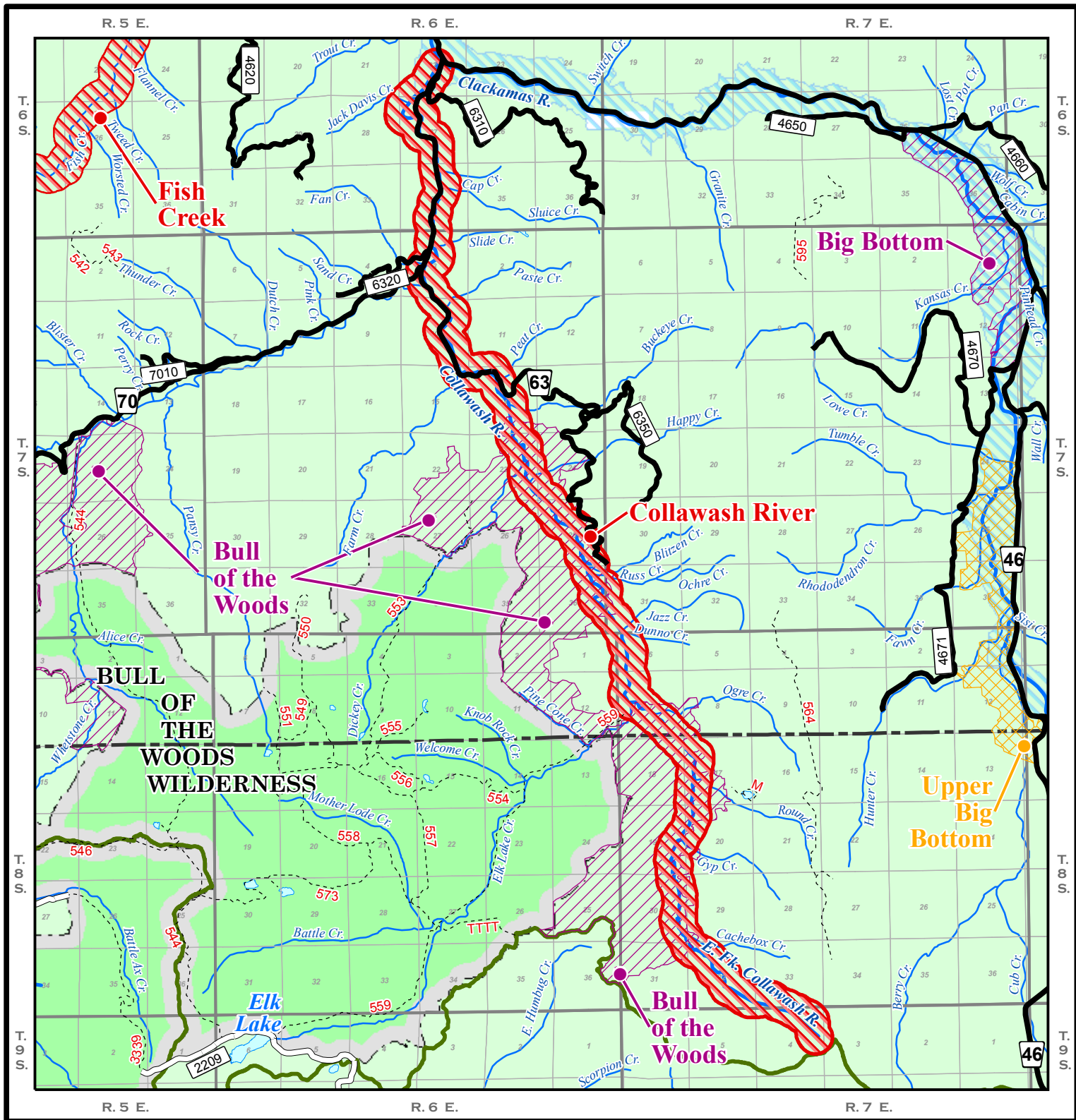
There is evidence of prehistoric use of the river by Native Americans; existing evidence of the use includes the presence of obsidian flakes and some peeled cedars in various locations throughout the corridor. There is a high potential for Native American camping sites though none have been found at this time. These evidences do have local importance in interpreting the history of the area. Because of this, historical/cultural values were rated a “2” for the segment.

#### **Eligible: Yes**

This determination is based on the outstandingly remarkable geologic and fishery values as identified above.

**Potential Classification: Recreational**

The visible presence of the road from the river for almost all of the river segment, as well as the presence of some visible timber harvest units from the road and river make the segment ineligible for both the “Wild” and “Scenic” classifications. Because of this, the potential classification is “Recreational”.



## Wild and Scenic Rivers - Collawash River

Prepared at the request of U. S. Senator Wyden - August 3, 2007

### Additions

- Collawash River
- Wild and Scenic Rivers
- Wilderness Areas
- Other Designations

### Existing US Forest Service Base Data

- Mt. Hood NF
- Wilderness
- Lakes
- River
- Creeks
- Wild and Scenic Rivers
- Trails **Trails:** 437
- Paved Roads **Collectors:** 2710 **Arterials:** 42
- Other Paved Roads



The reliability or suitability of this information for a particular purpose cannot be guaranteed. The data and product accuracy may vary due to compilation from various sources, including modeling and interpretation, and may not meet National Map Accuracy Standards. This information may be updated, corrected, or otherwise modified without notification.